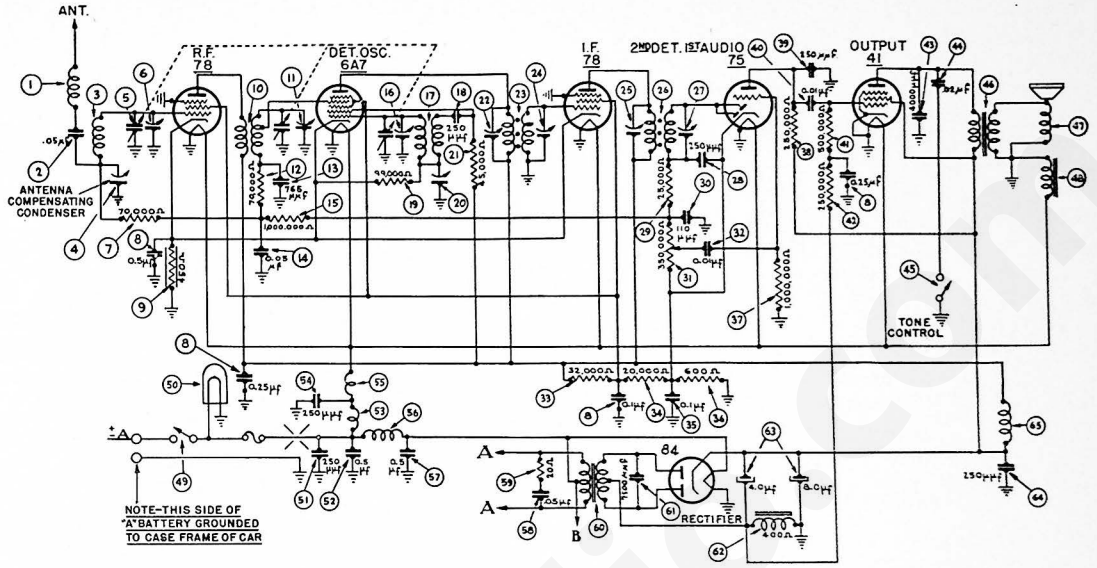
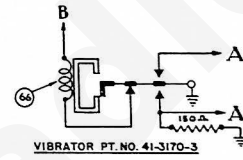
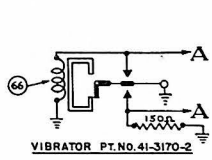


MODEL P-1517



NOTE—THIS SIDE OF
"A" BATTERY GROUNDED
TO CASE FRAME OF CAR



IF = 260 KC

Aligning Procedure will be found on page 167.

PARTS LIST — MODEL P-1517

No.	Description	Part No.	No.	Description	Part No.
1	Antenna Choke	32-2344	43	Condenser (1,000 mmfd.)	30-4185
2	Condenser (.05 mfd.)	30-4444	44	Condenser (.02 mfd.)	30-4419
3	Antenna Transformer	32-2516	45	Tone Control Switch	42-1383
4	Antenna Compensating Condenser	31-6082	46	Output Transformer	32-7495
5	Tuning Condenser	31-1930	47	Cone & Voice Coil	36-3586
6	First Padder (on Tun. Cond.)	33-370344	48	Field Coil Assembly	36-3597
7	Resistor (70,000 ohms)	33-510344	49	On & Off Switch	42-1368
8	Condenser (1.1-25-.25-.5 mfd.)	30-4415	50	Pilot Lamp	34-2089
9	Resistor (450 ohms)	33-1218	51	Condenser (250 mmfd.)	30-1032
10	R. F. Transformer	32-2307	52	Condenser (.5 mfd.)	30-4015
11	Second Padder (on Tun. Cond.)	33-370344	53	"A" Choke	32-2535
12	Condenser (.765 mmfd.)	30-1069	54	Condenser (250 mmfd.)	30-1032
13	Condenser (.05 mfd.)	3615-05G	55	Filament Choke	32-1604
14	Resistor (1,000,000 ohms)	33-510344	56	Vibrator Choke	32-2059
15	Third Padder (on Tun. Cond.)	33-345344	57	Condenser (.5 mfd.)	30-4015
16	Resistor (25,000 ohms)	33-325344	58	Condenser (.05 mfd.)	30-4444
17	Condenser (250 mmfd.)	30-1032	59	Resistor (20 ohms)	33-020344
18	Resistor (99,000 ohms)	33-399344	60	Power Transformer	32-7550
19	Low Frequency Padder	31-6102	61	Condenser (7,500 mmfd.)	30-4420
20	Padder (Pri. 1st. I. F. Trans.)	33-345344	62	"B" Filter Choke	32-7545
21	First I. F. Transformer	32-2026	63	Filter Condenser (4-8 mfd.)	30-2150
22	Padder (Sec. 1st. I. F. Trans.)	32-2027	64	Condenser (250 mmfd.)	30-1032
23	Padder (Sec. 2nd I. F. Trans.)	32-2027	65	"R" Choke	32-1281
24	Condenser (250 mmfd.)	30-1032	66	Vibrator (OPTIONAL)	41-3170-3
25	Resistor (25,000 ohms)	33-325344	67	Receiver Housing	32-9150
26	Condenser (110 mmfd.)	30-1031	68	Pilot Lamp Assembly	32-8467
27	Volume Control (250,000 ohms)	33-5139	69	Tuning Shaft	28-8783
28	Condenser (.01 mfd.)	3903-08U	70	Volume Shaft	28-8784
29	Resistor (32,000 ohms)	33-32434	71	Scale Assembly	42-5176
30	Resistor (20,000 ohms)	33-320344	72	Gland Nut	28-6773
31	Condenser (.01 mfd.)	3903-05G	73	Four Prong Socket	27-6044
32	Resistor (600 ohms)	33-1212	74	Five Prong Socket	27-6035
33	Resistor (1,000,000 ohms)	33-510344	75	Six Prong Socket	27-6036
34	Resistor (250,000 ohms)	33-424344	76	Seven Prong Socket	27-6037
35	Condenser (250 mmfd.)	30-1032	77	Interference Condenser (Dome Light)	30-4007
36	Condenser (.01 mfd.)	3903-08U	78	Interference Condenser (Generator)	30-4475
37	Resistor (500,000 ohms)	33-449344	79	Distributor Resistor	4391
38	Resistor (250,000 ohms)	33-424844	80	Fuse	4297

